

## Feeding the Wildlife Throughout the Winter



As the heat of summer beats down on us we always want cooler **weather** but when it actually gets here we want the warmer weather back. As

**humans**, our main worry is that we are either too hot or too cold, but the **wildlife** has it a little different. Most of the animals have to **forage** for food in the winter months, especially when there is **snow** covering the ground. So, this **winter** when you are sitting in your nice warm house, drinking a cup of hot chocolate and watching cartoons, I want you to really think about what it would be like to never have a guaranteed **warm** place to sleep or what it would be like to go for days without a **meal**.

Most people have a strong desire to feed the wildlife in the winter to help them survive because there is a concern that some **animals** will not be able to **survive** without the help. The truth is, most wildlife has adapted to living through the winter in their natural area. Feeding an **unnatural** diet to wildlife can make animals sick so people have to be very careful what they put out to feed the wildlife. It is very important that any **feeders** and the area around them should remain clean, as dirty feeders can cause **disease**. You should also make sure

that feed is not moldy or wet as this can promote unhealthy conditions.

There are things you can do to make sure that the wildlife that lives around your house has a nice meal each and every day. And no matter where you live, country or town, there may be a few things you can do to help them have that nice warm place to sleep.

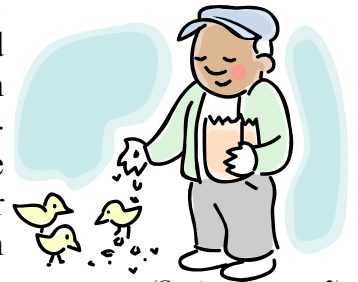
Just make sure to put the **food** in either a feeder or up on a high table so the birds are protected. If you just scatter it on the ground then the birds are at risk of being attacked by a cat or other hungry animal.

**Pine Cone Treats:** If you can find some **pine** cones this is an easy treat to make. Take peanut butter and put a blob of it on a paper plate. Roll pine **cones** in the peanut butter. On a separate plate pour out some **bird** seed and roll the coated cones in it. Tie yarn to the tree

limbs close to the house and watch the birds!!! Maybe even some squirrels too!!

**Pop Bottle Feeder:** Take the label off an empty plastic pop bottle. Cut out a large oval hole on both sides about half way up. This way the birds can get in out of the snow or rain to eat. Heat up a large nail on the stove, holding with a hot pad and pliers—kids, get mom or dad to do this!!!

Use the heated nail to put drain holes in the bottom and at the top for a hanger hole. Then

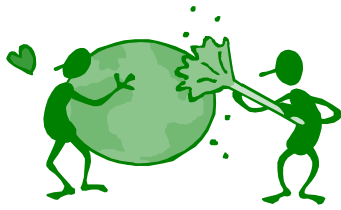


(Continued on page 2)



# Nuts About Nature

Compliments of the  
Fayette County SWCD



## WORD FIND

There are  
Twenty-one, green bold  
words.  
Search for those words  
in our Conservation Word  
Search at the right.

E	H	V	S	J	U	E	F	I	L	D	L	I	W	S
V	U	R	S	E	N	D	S	F	S	R	F	N	Q	W
I	M	L	E	D	N	L	I	R	O	O	Q	U	X	O
V	A	Q	W	H	A	O	N	S	R	O	I	E	J	N
R	N	O	X	M	T	O	C	A	E	R	D	L	Q	S
U	S	F	I	R	U	A	G	R	R	A	M	E	A	L
S	Q	N	I	Z	R	E	E	E	T	O	S	H	H	R
S	A	O	K	B	A	H	L	W	A	F	P	E	F	I
Y	T	O	X	J	L	S	R	E	T	N	I	W	P	Q
Z	J	E	M	F	E	E	D	E	R	S	N	B	B	T
F	I	R	P	R	X	C	Z	C	W	U	E	I	D	Y
N	A	J	Z	T	G	F	U	U	U	Q	R	S	T	E
W	A	Y	Y	D	Y	F	J	K	O	D	E	E	S	H
T	S	J	S	H	E	L	T	E	R	I	A	B	Z	Z
N	F	T	D	D	S	O	E	S	B	N	L	R	D	Y



string some beads on yarn and run it through the top hole. Fill with bird **seed**. But don't forget to keep the feeders filled and to provide ice-free water for them to drink.

**Feeding Birds:** Birds could eat any of the following items if put out for them, - unsalted peanuts, wild bird seed, crumbled or grated cheese, stale cake, pastry, biscuits, breadcrumbs, cooked rice, cooked potatoes, cooked pasta, unsalted meat fat, soaked raisins or other soaked dried fruit, coconut halves.

**Feeding Squirrels:** **Squirrels** need some help surviving the winter months also. They will eat unsalted nuts, chopped apples, carrots, spinach, or green beans. Just for a few helpful hints.

**One thing that everyone needs to remember is this,** if you put food out for the wildlife that means that wildlife will come. If you put it around your house there will be wild animals around your house. If you put it around a shed they will be around the shed. So, make sure you put the feeders someplace that you know will be safe for the wild animals as well as safe for your dog or cat. Because some of the animals you attract will be wild not pets. They need to eat but that doesn't mean they will like being around other animals, like your **pets**.

You can help provide some **shelter** for various animals by leaving piles of leaves or bush for them to make a home in. This will allow them to get out of the wind and weather if it storms and then in the spring if your parents want to they can remove it. Just remember to build these areas far enough away from your home that your pets don't bother them and they don't bother your pets or you.

